

BIZSON nv

Management Consulting & Implementation

**Rue de Tournai 361
B-7973 Stambruges
BE0458.767.41 – RPM Tournai**



+32475716084

dirk.mostien@bizson.eu

Don't M.I.S.
“The Bizson Concept”

From quick scan to management tool

“The Bizson Concept.”

- What ever the industry the basics and principal indicators remain the same:
 - **Machines**
 - **Raw Materials**
 - **Human Resources**
 - **Concept**
 - **Product**
- The aim – to create added value in an efficient and profitable way:
 - **Efficiency**
 - **Productivity**
 - **“Plant – load”**
 - **Optimisation**

“The Bizson Concept.”

- Machines:
 - Kg, meter, litre, m², joule, mileage ...
 - Speed
 - Usage /consumption
 - Downtime
 - Breakdowns
 - Labour required
 - Loss
 - Others (elongation, shrinkage...)
 - Algorithm



“The Bizson Concept.”



- Raw Materials

- Blends, mix
- Material loss
- Material specific behaviour
- Price concept
- Machine impact / specifics
- Characteristics
- Constructions (A – ABA – AB)
- Algorithm

"The Bizson Concept."



The "Human" factor

- Headcount/payroll
- Wage rates / all-in cost/hour
 - Efficiency
- Productivity (absenteeism,...)
 - Holiday planning
- Flexibility (shift / night / weekend)
- Effectiveness (work/presence)
 - Algorithm

“The Bizson Concept.”

- The concept:
 - Raw Materials, Machines, Human resources
=> product
 - Only through the “CONCEPT”
 - Amalgam of algorithms – in line with the typical reflections of the industry – research – fine tuning – the local “flavour”
 - The Centre of “ALGORITHMS”



“The Bizson Concept.”



"The Bizson Concept."



Offset Printing



Logistics 3 PL / 4 PL



Wall to Wall Tufting



Injection Moulding

“The Bizson Concept.”



Floor Lamination



Rolling of Aluminium



Thermoforming



Yarn extrusion

“The Bizson Concept.”



Aluminum Extrusion



Meat Production



Carpet Weaving



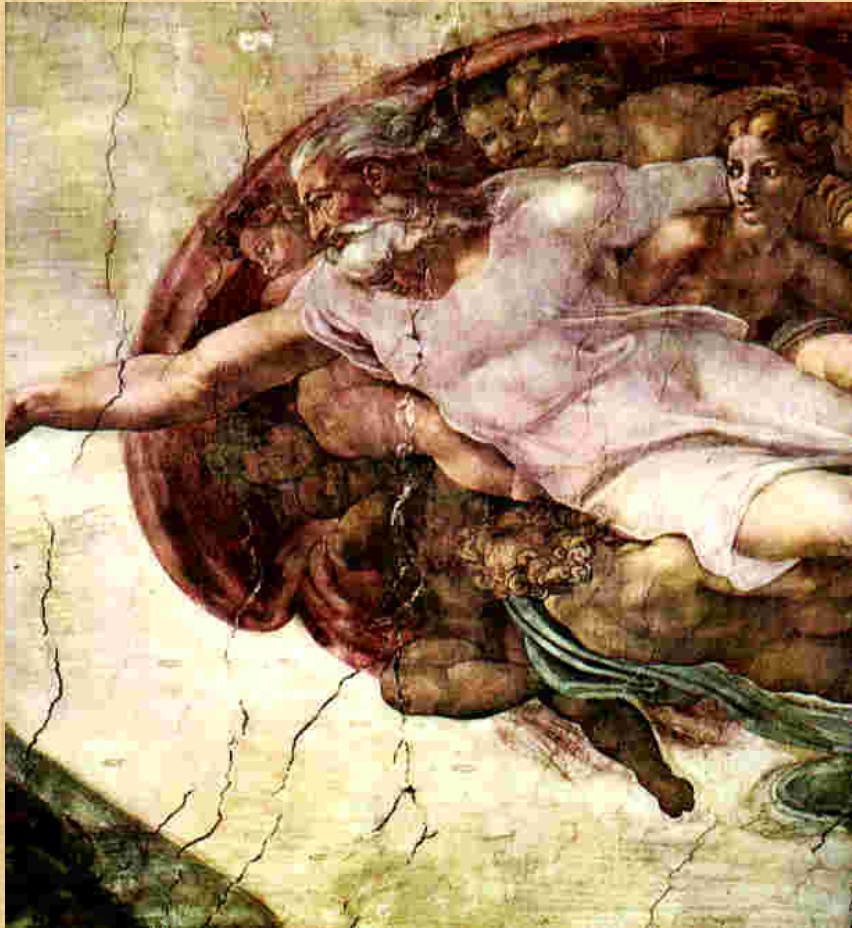
Rotogravure

“The Bizson Concept.”

- What ever the industry the basics and principal indicators remain the same:
 - **Machines**
 - **Raw Materials**
 - **Human Resources**
 - **Concept**
 - **Product**
- The aim – to create added value in an efficient and profitable way:
 - **Efficiency**
 - **Productivity**
 - **“Plant – load”**
 - **Optimisation**

“The Bizson Concept.”

The Outcome



- Interaction
- Full integration
- Individual costing
- Margin analysis by customer/product
- Capacity review – Machine Load
- Full occupancy target – Plant Load maximization
- Optimum environment
- Immediate bottom-line calculation

- *“The SUMMUM”*
- *Linked with “WHAT Ever”*
- *The “Ultimate power”*

“The Bizson Concept.”

“The Bizson Concept”:

No limitations towards what ever industry - just describe:

Methodology – Concept - Product – Market Customer – Components)

Bottom line (Top down/Bottom Up) Result in an open “What If” environment



“The Bizson Concept.”

The solution comes in 3 modules:

- *Budres* (a budget in a minute)
- *Simres* (“What if” in a second)
- *Perres* (The periodic result immediately)

“The Bizson Concept.”



**“ FLY with the EAGLES,
Breed your FUTURE”**

“The Bizson Concept.”

The “concept has already been implemented in:

- “Rolling of aluminum”
- “Carpet Weaving” / “Upholstery”
- “Injection Molding – packaging – horticulture”
- “Thermoforming – classic/rolling (plastics) – packaging
- “Label Printing (wet glue / PSL – Helio / offset)”
- “Tufting” / “Vinyl” / “Laminate”
- “Retail” / “Mass Retail” / “Wholesale”
- “Food-processing” (ham/prepared dishes/...)
- “Yarn Extrusion (Nylon / PP / PE)”
- “Wool fabrics” / “Wool dyeing”
- “Transports – Logistics – 2/3/4 PL”
- “Aluminum Extrusion – Profiles”
- “Foil extrusion”
- “Building supplies” – raised floors / production
- ...

Don't M.I.S.

“The Bizson Concept”

Don't M.I.S. the samples show

From quick scan to management tool

BIZSON nv

Management Consulting & Implementation

Rue de Tournai 361

B-7973 Stambruges



+32475716084

dirk.mostien@bizson.eu